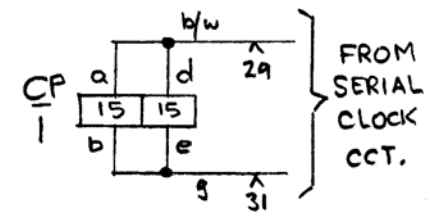
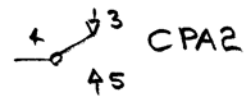
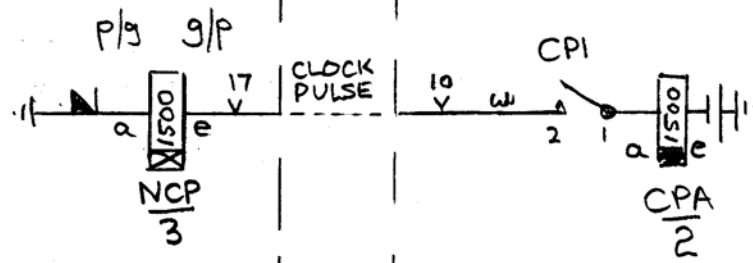
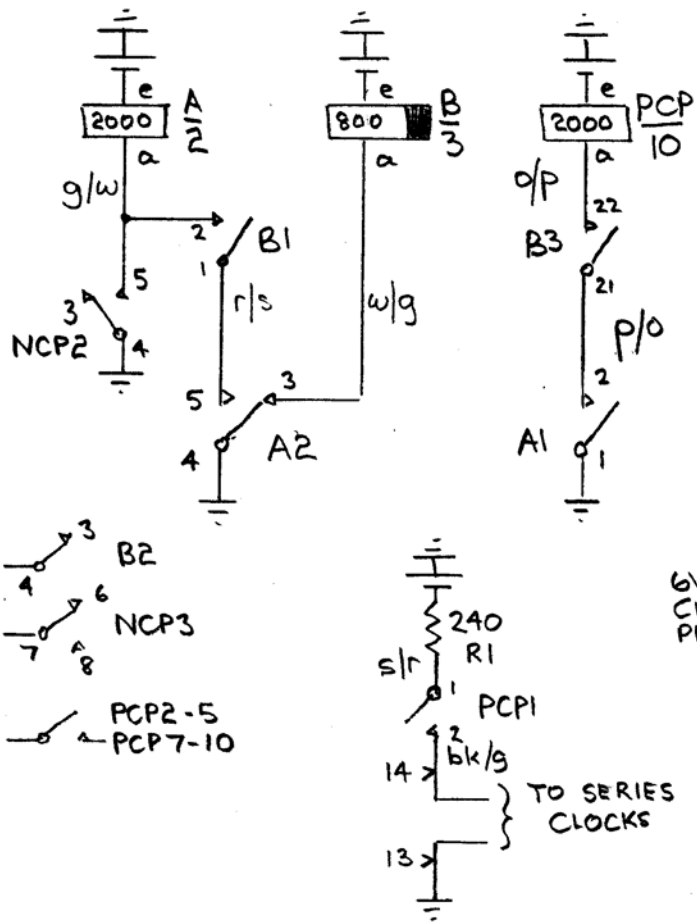
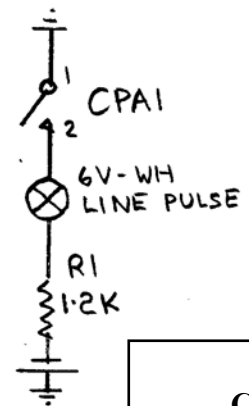
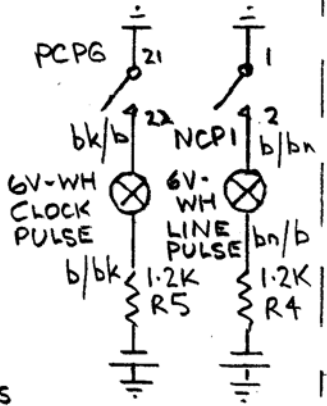


PARKEND | CABLE | NORCHARD

50V -ve batt. upt 12  
earth upt 11



note: u pts must make if relay set is removed



<b>Parkend</b>		
<b>Clock Pulse Reception Relay Set</b>		
<b>DFR ex015a</b>		
ISSUE A	13/12/2010	Opening Issue
<b>Dean Forest Railway</b>		

